

Assembly Instructions for 6035/8664 Power Mechanism





Place one mech scissor on its side with these mounting locations showing





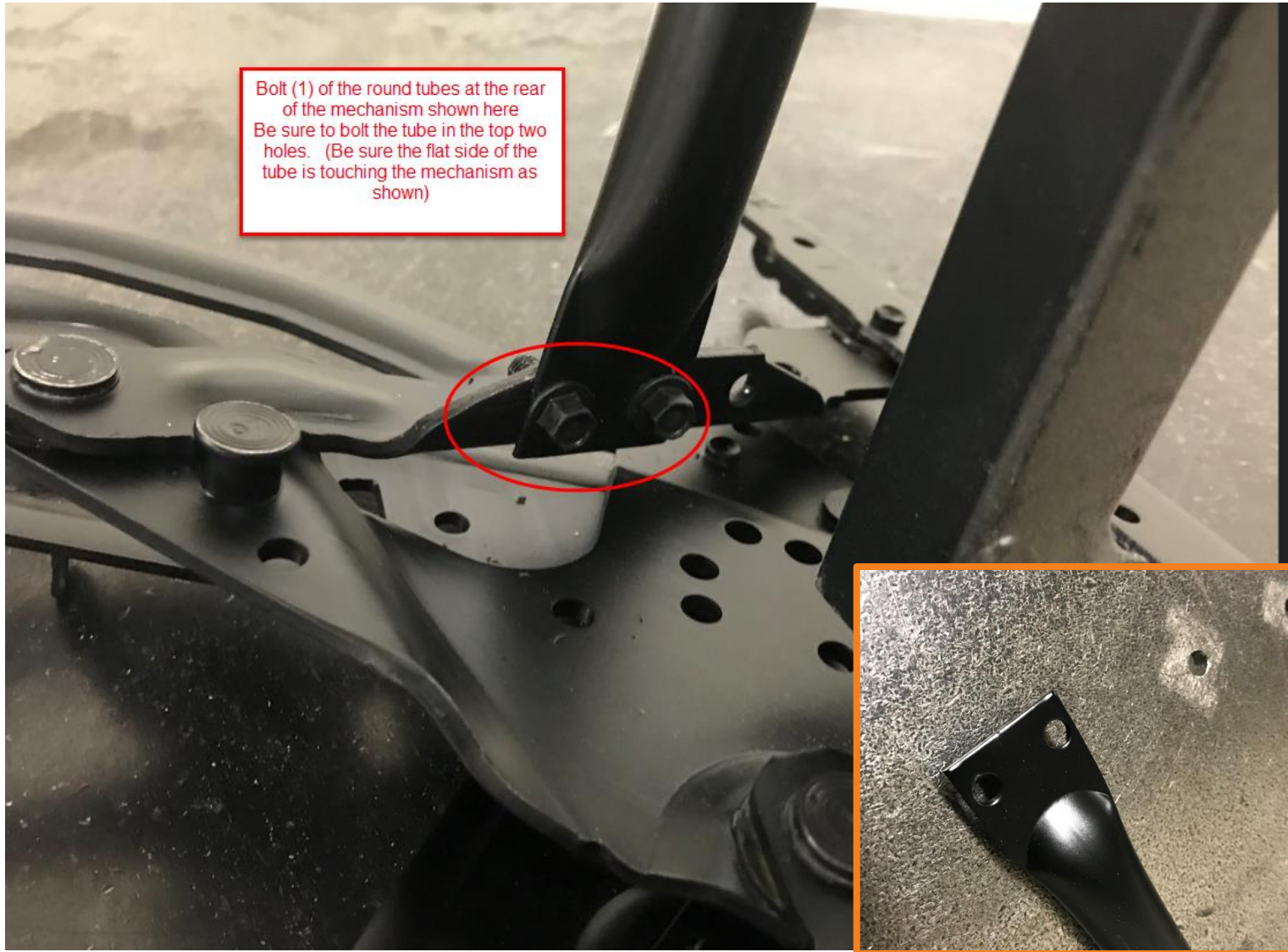
Bolt the motor drive bar (square tubing with brackets welded on) in the location shown
Be sure the bracket is oriented as shown





Bolt (1) of the round tubes at the front of the mechanism shown here (Be sure the flat side of the tube is touching the mechanism as shown)





Bolt (1) of the round tubes at the rear of the mechanism shown here
Be sure to bolt the tube in the top two holes. (Be sure the flat side of the tube is touching the mechanism as shown)





Connect the opposite side mech scissor using the corresponding mounting locations





Connect motor to drive bar using long pin and cotter key

