




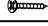




Assembly Instruction for
SLAT BACK SIDE CHAIR
DGD850SBC

Caution: Please read instructions thoroughly before unpacking assembly parts. Sharp, exposed staple tips can cause injury, therefore, for your protection, please remove any exposed staples used in packing.

- 1. We recommend that you should assemble this product with the assistance of another person; this will make assembly easier, and will help to eliminate damage to the product or injury to persons during assembly.
- 2. Be sure to check all packing materials carefully for small parts that may have come loose inside the carton during shipment.
- 3. Please do not over tighten screws or bolts.
- 4. Please put all parts on a non-abrasive floor before assembly, and follow the assembly steps to assemble your newly purchased product correctly and efficiently.

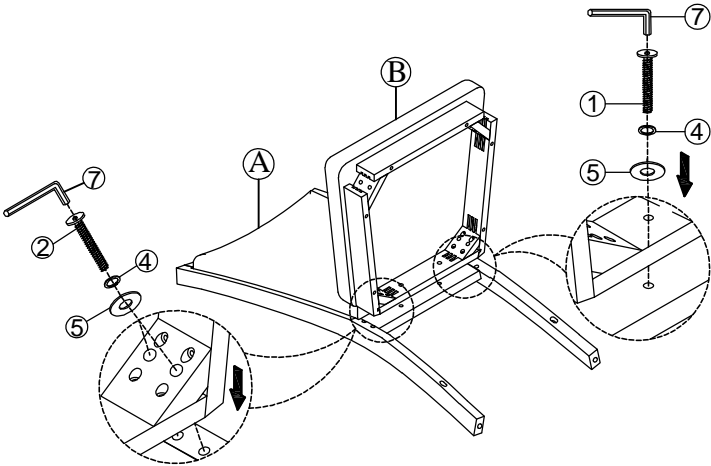
PART LIST			
No.	PART DESC	CODE.	Q'TY
A	SIDE CHAIR - BACK FRAME	PDGD850SBCBFR	1
B	SIDE CHAIR - SEAT FRAME W/ CUSHION	PDGD850SBCSEA	1
C	SIDE CHAIR - L / R FRONT LEGS	PDGD850SBCLEG	2
D	SIDE CHAIR - L / R SIDE STRETCHER	PDGD850SBCSTR2	2

HARDWARE LIST			
No.	HARDWARE DESC	CODE.	Q'TY
1	 ALLEN BOLT (Ø1/4"*1-5/8")	PDGD850SBCHW	2
2	 ALLEN BOLT (Ø1/4"*2-3/8")		4
3	 ALLEN BOLT (Ø1/4"*3")		4
4	 SPRING WASHER (Ø1/4")		10
5	 FLAT WASHER (Ø1/4")		10
6	 SCREWS/ VIS (#4*1-1/2")		4
7	 ALLEN KEY (Ø1/8")		1

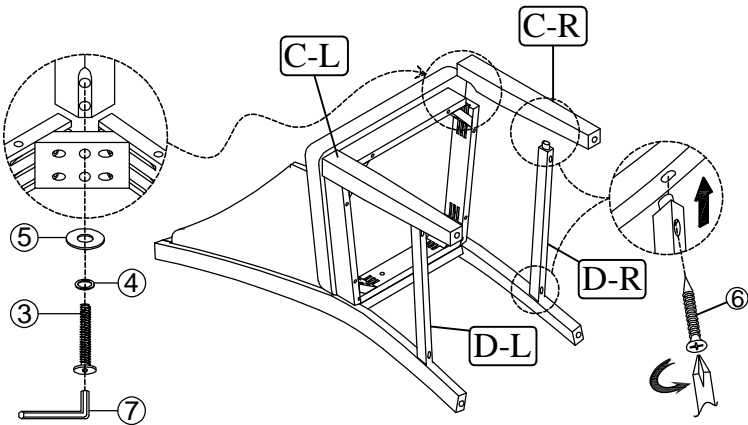
 Only tighten all bolts when all bolts aligned with bolt inserts.

Step 1: Assemble corners1st as
some adjustment may be needed.

Step 2: Assemble Center bolts
after corner bolts assembled.



Step 3: Assemble Legs.



Completed

